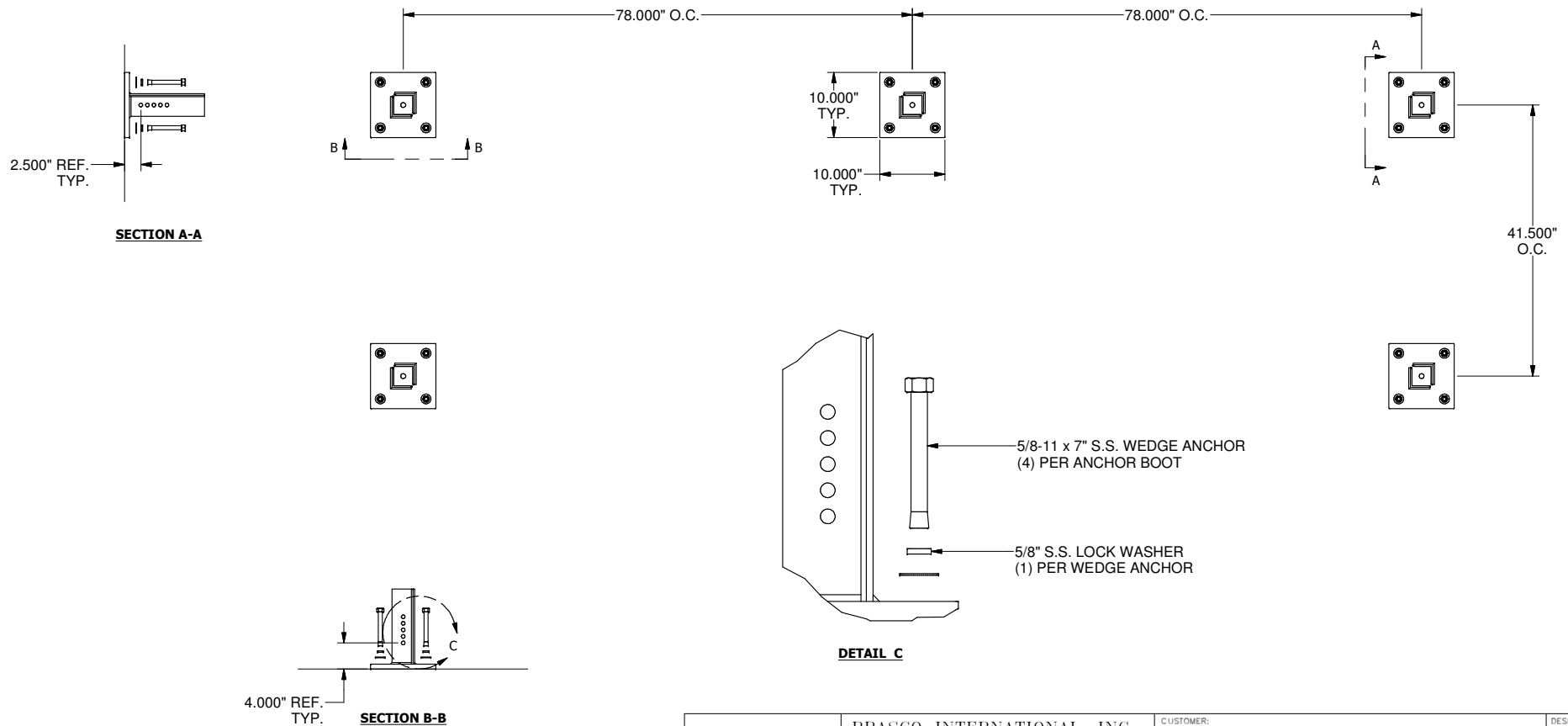

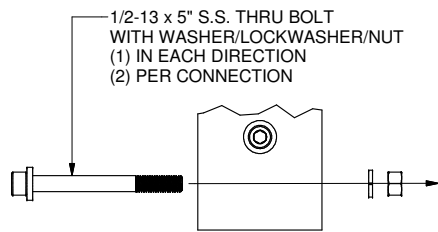


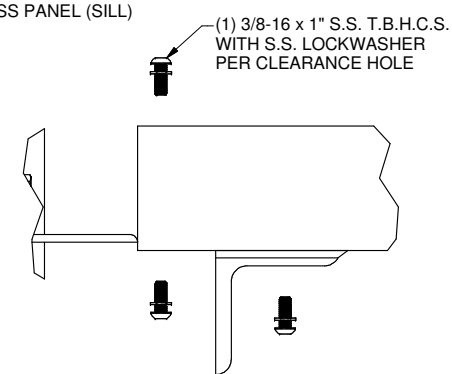
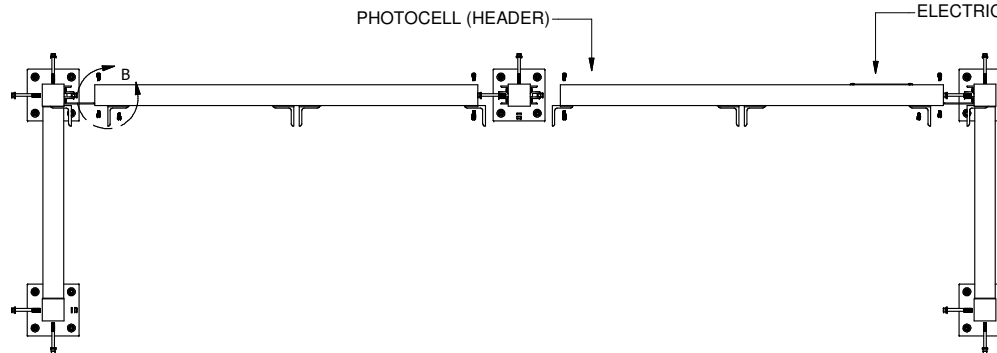
- LOCATE ANCHOR BOOT AS SHOWN. MARK ALL HOLE LOCATIONS AND MOVE BOOT OUT OF THE WAY.
- DRILL A $\phi 5/8$ " HOLE IN CONCRETE USING A CARBIDE BIT AND A HAMMER DRILL. THE HOLE NEEDS TO BE DRILLED A MIN. DEPTH OF 6 1/2" IN ORDER TO ALLOW SPACE FOR DEBRIS TO FALL DURING THE INSTALLATION PROCESS.
- BEFORE INSERTING THE WEDGE ANCHOR IT IS IMPORTANT TO CLEAN DEBRIS FROM THE HOLE USING A WIRE BRUSH, VACUUM OR COMPRESSED AIR TO ENSURE THAT THE HOLE IS CLEAN OF ANY DEBRIS. THIS STEP IS CRITICAL FOR SUCCESSFUL ANCHOR INSTALLATION.
- PUT THE WASHER AND LOCK WASHER ON THE WEDGE ANCHOR AND THREAD THE NUT ON. IT IS IMPORTANT TO MAKE SURE THAT THE NUT IS THREADED SO THAT THE TOP OF IT IS LEVEL WITH THE TOP OF THE WEDGE ANCHOR IN ORDER TO HELP PROTECT THE THREADS FROM ANY DAMAGE WHILE HAMMERING THE ANCHOR INTO THE HOLE.
- REPLACE ANCHOR BOOT AND ALIGN WITH HOLES.
- INSERT THE WEDGE ANCHOR WITH THE CLIP END FIRST THROUGH THE BOOT AND INTO HOLE IN THE CONCRETE. USING A HAMMER, HIT THE WEDGE ANCHOR AND NUT WITH SHARP BLOWS UNTIL THE WASHER AND NUT ARE SNUG AGAINST THE ANCHOR BOOT PLATE.
- DO NOT FULLY TIGHTEN THE NUTS UNTIL THE WALLS ARE ASSEMBLED AND THE ROOF IS IN PLACE.



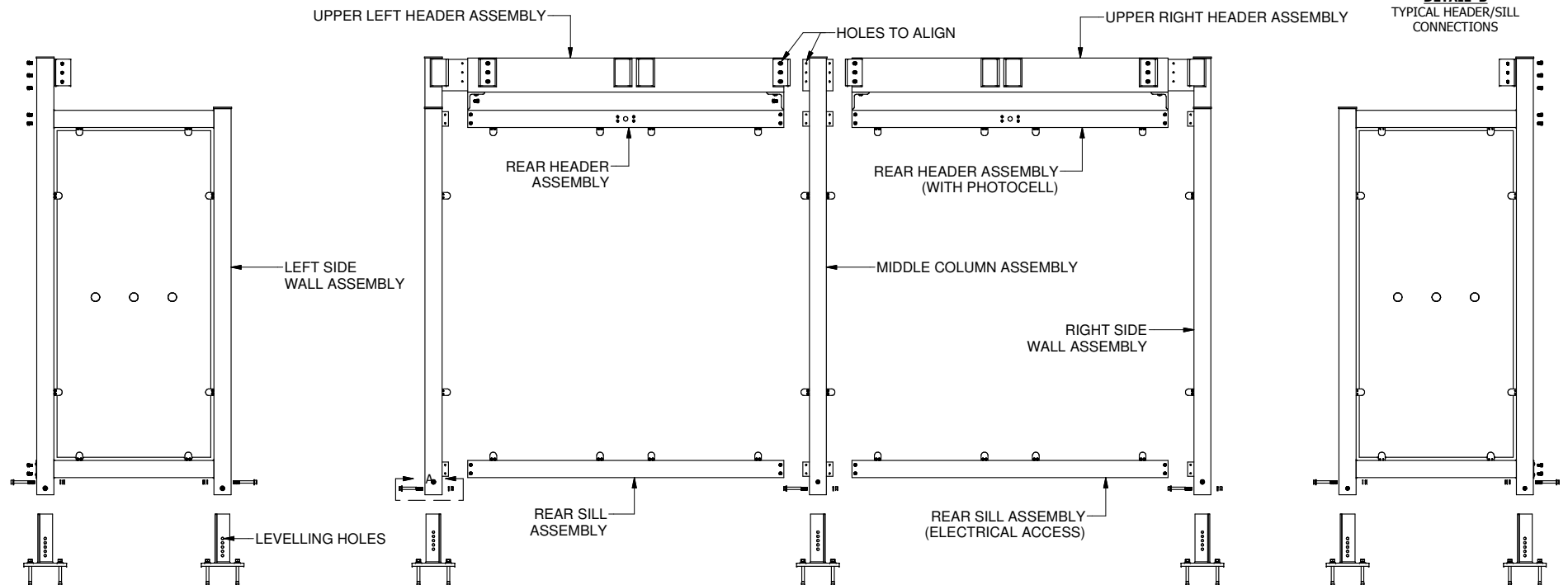
	BRASCO INTERNATIONAL, INC. 32400 INDUSTRIAL DR. MADISON HEIGHTS, MICHIGAN 48071 1-800-893-3665 WWW.BRASCO.COM		CUSTOMER: BRASCO INTERNATIONAL, INC		DESIGNER: HAUS	CHECKER: BDH
	THIS DRAWING IS CONFIDENTIAL AND IS FOR THE SOLE USE OF OUR CUSTOMERS AND MAY NOT BE REPRODUCED OR COPIED WITHOUT WRITTEN PERMISSION FROM BRASCO INTERNATIONAL.		PROJECT: TRIDENT INSTALLATION INSTRUCTIONS		DATE: 4-24-14	DATE: 4-25-14
			MODEL: ANCHOR BOOT LAYOUT	JOB # N/A	SHEET: 001	REVISION: A



DETAIL A
TYPICAL COLUMN TO
BOOT CONNECTION



DETAIL B
TYPICAL HEADER/SILL
CONNECTIONS



SEE SHEET #3 FOR WIRING LAYOUT PRIOR TO MAKING CONNECTIONS.

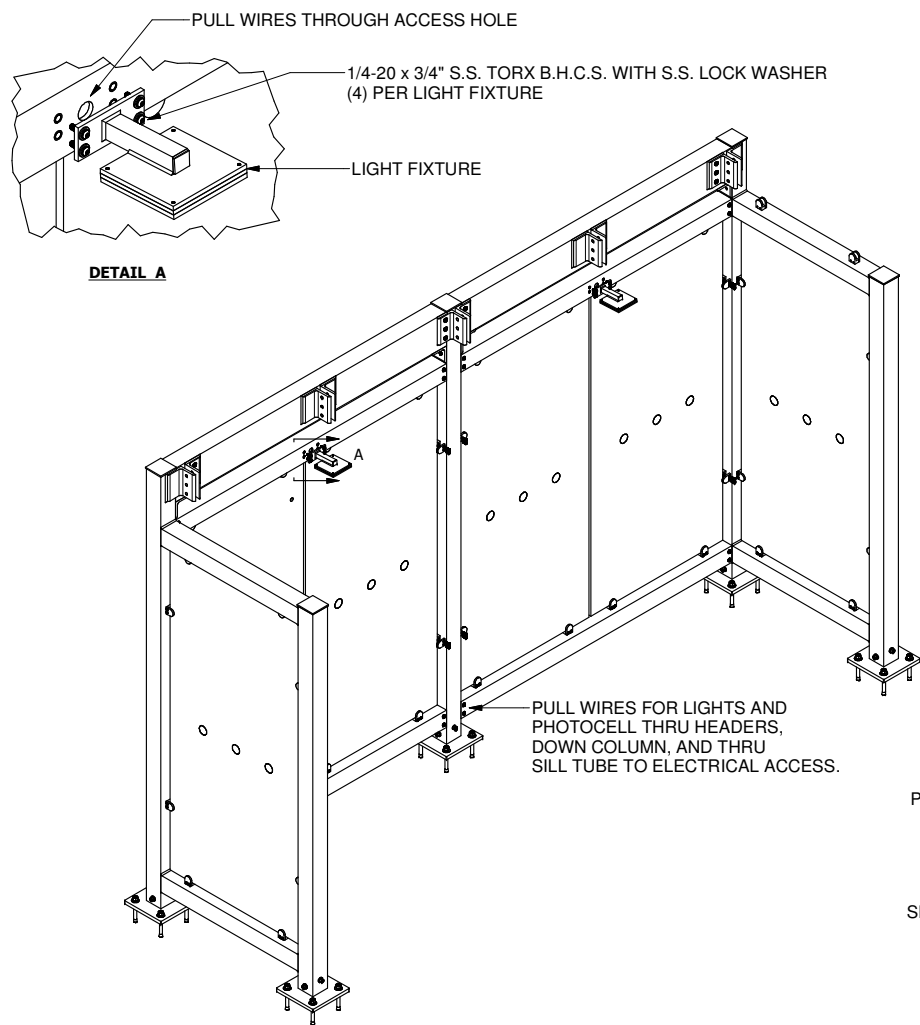
- ASSEMBLY WALLS AS SHOWN.
- PLUMB AND LEVEL WALLS USING HOLES IN ANCHOR BOOTS FOR ADJUSTMENT.
- ADD SHIMS PROVIDED TO FILL GAPS AS NEEDED



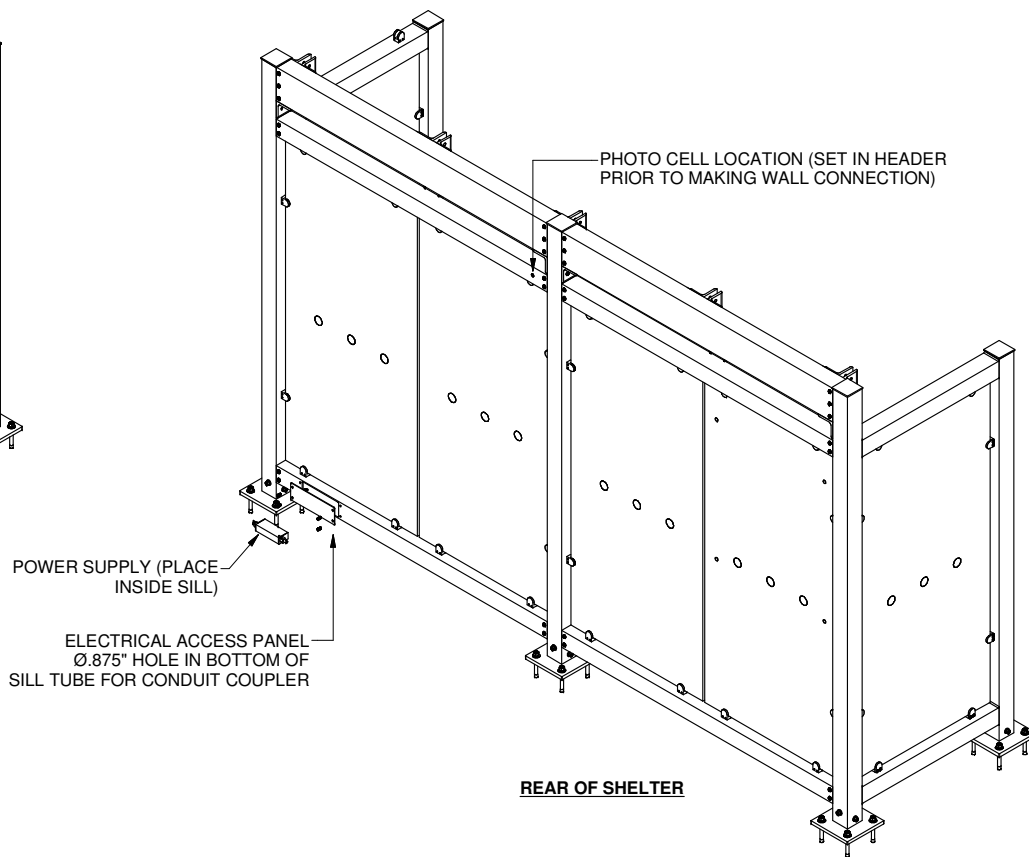
BRASCO INTERNATIONAL, INC.
32400 INDUSTRIAL DR.
MADISON HEIGHTS, MICHIGAN 48071
1-800-893-3665 WWW.BRASCO.COM

THIS DRAWING IS CONFIDENTIAL AND IS FOR THE SOLE USE OF
OUR CUSTOMERS AND MAY NOT BE REPRODUCED OR COPIED
WITHOUT WRITTEN PERMISSION FROM BRASCO INTERNATIONAL.

CUSTOMER: BRASCO INTERNATIONAL, INC		DESIGNER: HAUS	CHECKER: BDH
PROJECT: TRIDENT INSTALLATION INSTRUCTIONS		DATE: 4-24-14	DATE: 4-25-14
MODEL: WALL ASSEMBLY	JOB # N/A	SHEET: 002	REVISION: A



FRONT OF SHELTER



REAR OF SHELTER

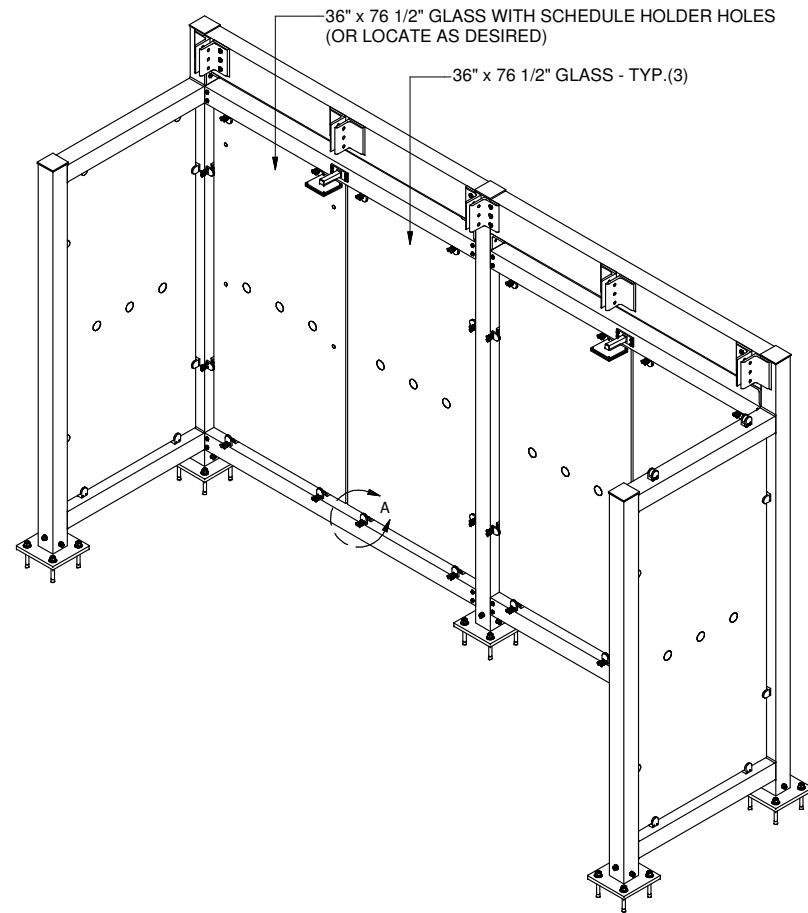



BRASCO INTERNATIONAL, INC.
32400 INDUSTRIAL DR.
MADISON HEIGHTS, MICHIGAN 48071
1-800-893-3665 WWW.BRASCO.COM

THIS DRAWING IS CONFIDENTIAL AND IS FOR THE SOLE USE OF
OUR CUSTOMERS AND MAY NOT BE REPRODUCED OR COPIED
WITHOUT WRITTEN PERMISSION FROM BRASCO INTERNATIONAL.

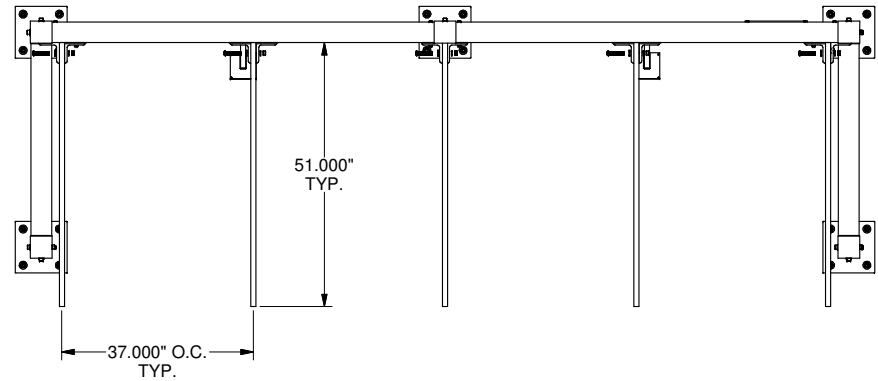
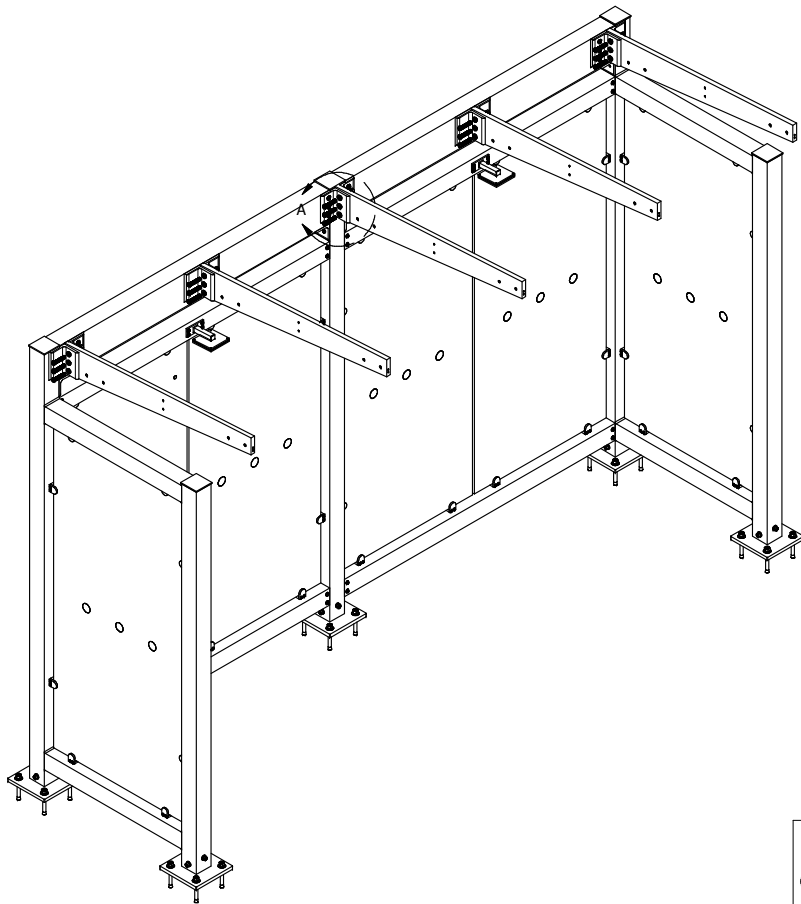
CUSTOMER: BRASCO INTERNATIONAL, INC		DESIGNER: HAUS	CHECKER: BDH
PROJECT: TRIDENT INSTALLATION INSTRUCTIONS		DATE: 4-24-14	DATE: 4-25-14
MODEL: WIRING ASSEMBLY	JOB # N/A	SHEET: 003	REVISION: A

- NOTE: EACH PIECE OF GLASS WILL WEIGH APPROX. 135 LBS.**

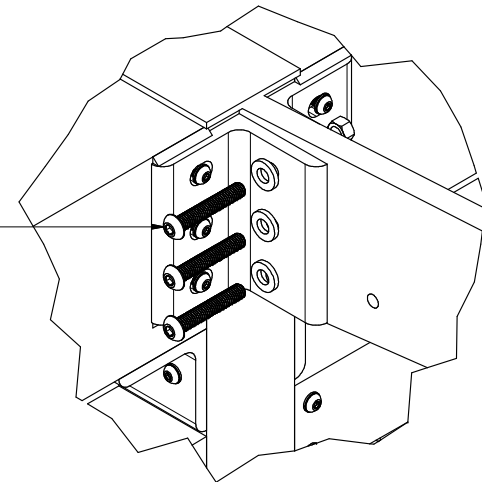


	BRASCO INTERNATIONAL, INC. 32400 INDUSTRIAL DR. MADISON HEIGHTS, MICHIGAN 48071 1-800-893-3665 WWW.BRASCO.COM		CUSTOMER: BRASCO INTERNATIONAL, INC		DESIGNER: HAUS	CHECKER: BDH
			PROJECT: TRIDENT INSTALLATION INSTRUCTIONS		DATE: 4-24-14	DATE: 4-25-14
	THIS DRAWING IS CONFIDENTIAL AND IS FOR THE SOLE USE OF OUR CUSTOMERS AND MAY NOT BE REPRODUCED OR COPIED WITHOUT WRITTEN PERMISSION FROM BRASCO INTERNATIONAL		MODEL: REAR GLASS ASSEMBLY	JOB # N/A	SHEET: 004	REVISION: A

-- SECURE RAFTER BLADES AS SHOWN



(3) 1/2-13 x 3\"/>



DETAIL A
TYPICAL RAFTER CONNECTION

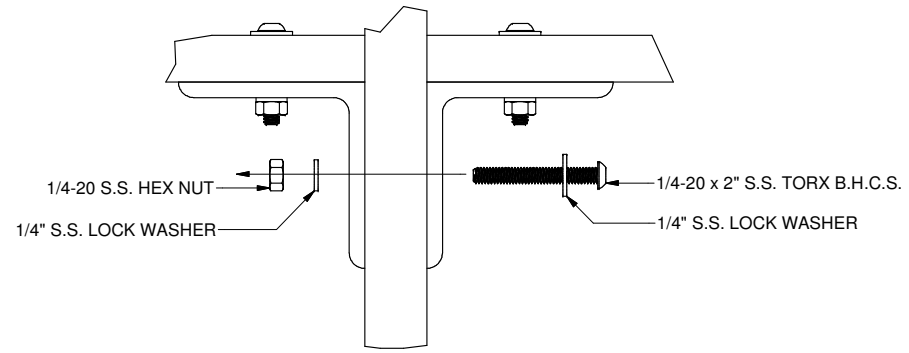
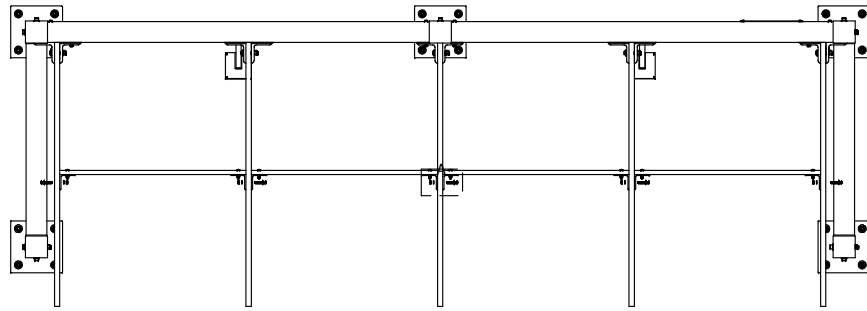
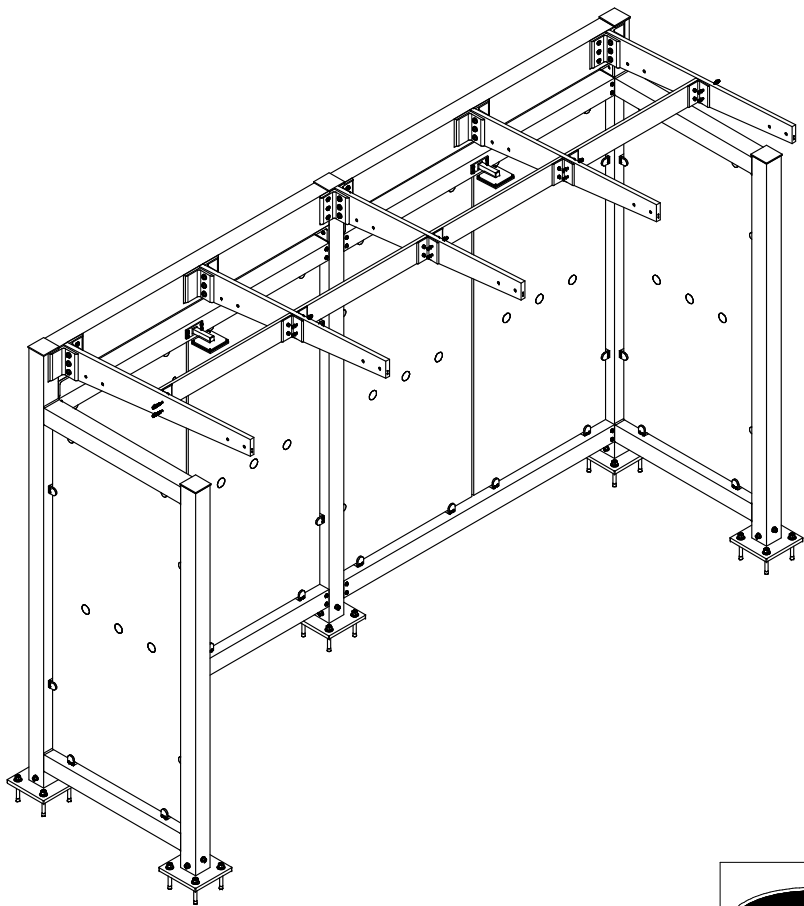


BRASCO INTERNATIONAL, INC.
32400 INDUSTRIAL DR.
MADISON HEIGHTS, MICHIGAN 48071
1-800-893-3665 WWW.BRASCO.COM


THIS DRAWING IS CONFIDENTIAL AND IS FOR THE SOLE USE OF
OUR CUSTOMERS AND MAY NOT BE REPRODUCED OR COPIED
WITHOUT WRITTEN PERMISSION FROM BRASCO INTERNATIONAL.

CUSTOMER: BRASCO INTERNATIONAL, INC		DESIGNER: HAUS	CHECKER: BDH
PROJECT: TRIDENT INSTALLATION INSTRUCTIONS		DATE: 4-24-14	DATE: 4-25-14
MODEL: RAFTER ASSEMBLY	JOB # N/A	SHEET: 005	REVISION: A

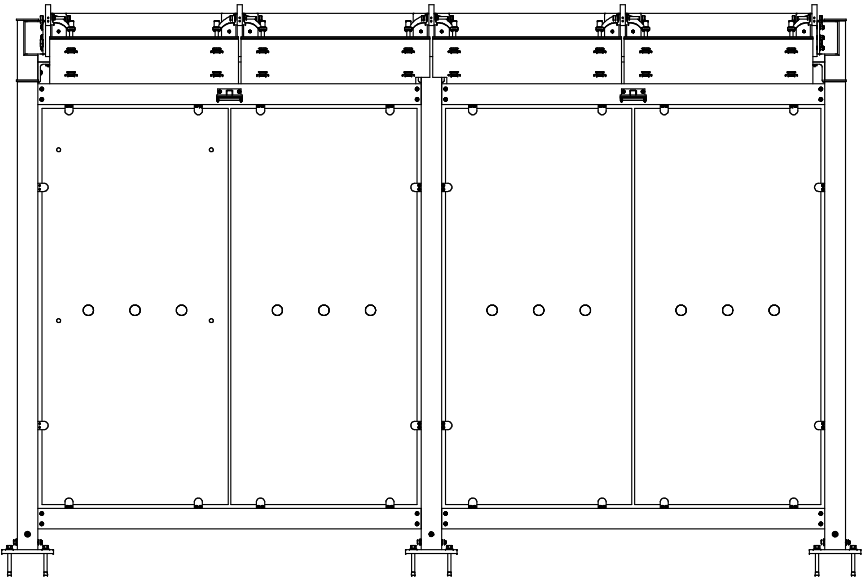
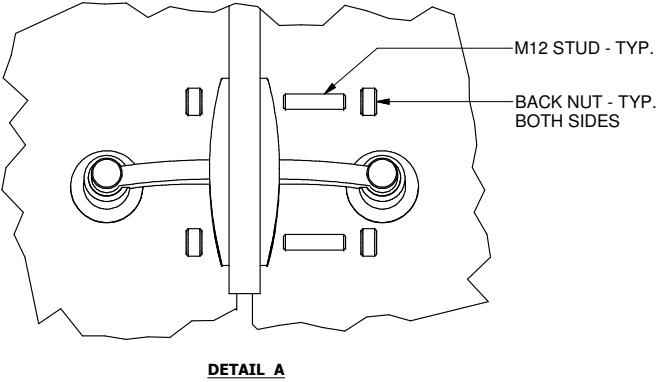
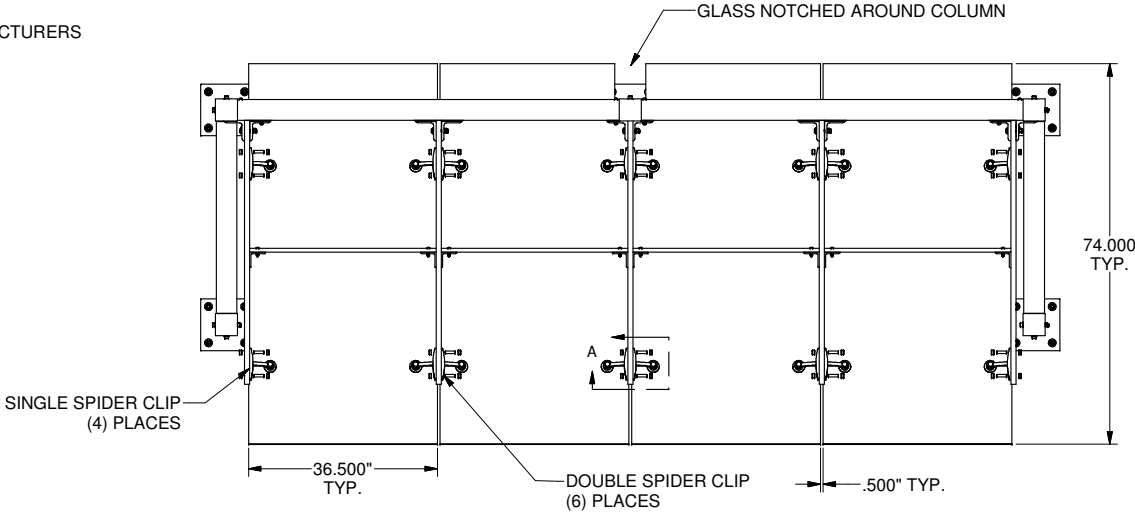
-- ATTACH PURLINS AS SHOWN.



DETAIL A
TYPICAL CONNECTION
(2) FASTENERS - (5) PLACES

	BRASCO INTERNATIONAL, INC. 32400 INDUSTRIAL DR. MADISON HEIGHTS, MICHIGAN 48071 1-800-893-3665 WWW.BRASCO.COM	CUSTOMER:		BRASCO INTERNATIONAL, INC		DESIGNER:	HAUS	CHECKER:	BDH
		PROJECT:		TRIDENT INSTALLATION INSTRUCTIONS		DATE:	4-24-14	DATE:	4-25-14
		MODEL:		PURLIN ASSEMBLY		JOB #	N/A	SHEET:	006
THIS DRAWING IS CONFIDENTIAL AND IS FOR THE SOLE USE OF OUR CUSTOMERS AND MAY NOT BE REPRODUCED OR COPIED WITHOUT WRITTEN PERMISSION FROM BRASCO INTERNATIONAL.									

- MOUNT SPIDER GLASS CLIPS TO RAFTERS AS SHOWN.
-- USING GLASS CUPS LIFT GLASS INTO PLACE FOLLOWING SPIDER GLASS CLIP MANUFACTURERS INSTRUCTIONS FOR SECURING GLASS PANELS.



BRASCO INTERNATIONAL, INC.
32400 INDUSTRIAL DR.
MADISON HEIGHTS, MICHIGAN 48071
1-800-893-3665 WWW.BRASCO.COM

THIS DRAWING IS CONFIDENTIAL AND IS FOR THE SOLE USE OF
OUR CUSTOMERS AND MAY NOT BE REPRODUCED OR COPIED
WITHOUT WRITTEN PERMISSION FROM BRASCO INTERNATIONAL.

CUSTOMER: BRASCO INTERNATIONAL, INC

PROJECT: TRIDENT INSTALLATION INSTRUCTIONS

MODEL: ROOF GLASS ASSEMBLY

JOB #

N/A

DESIGNER: HAUS

DATE: 4-24-14

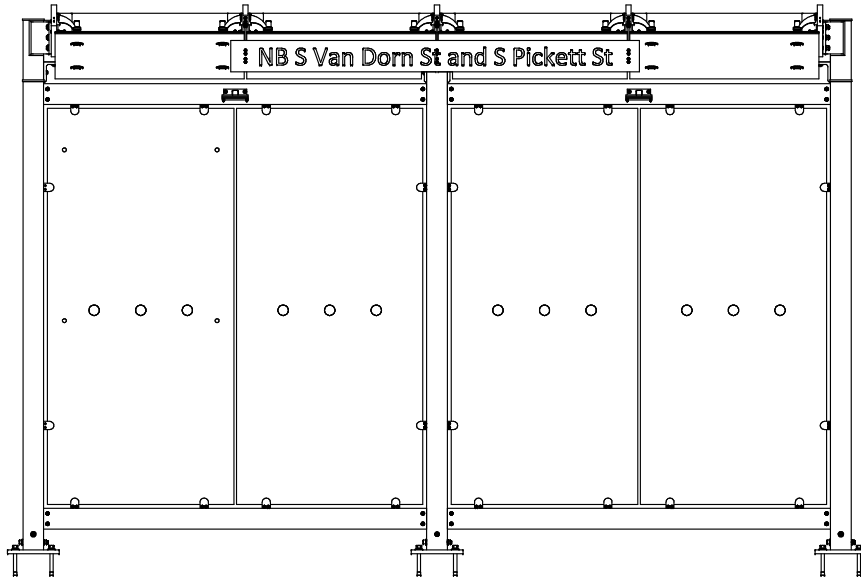
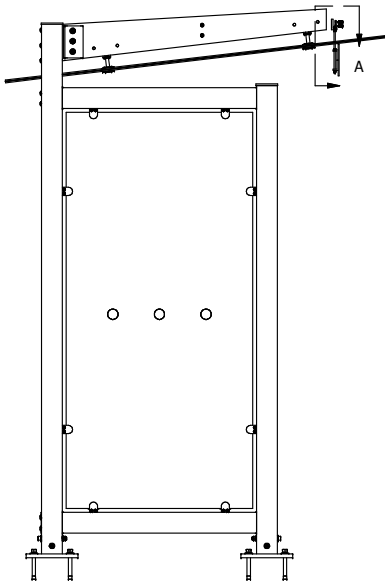
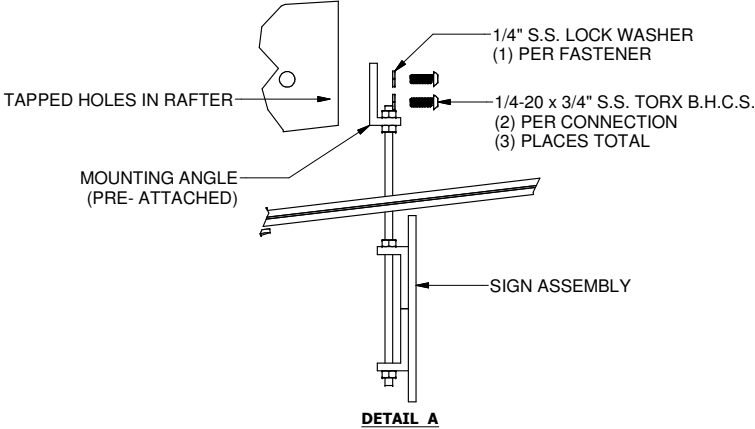
SHEET: 007

CHECKER: BDH

DATE: 4-25-14

REVISION: A

-- ATTACH SIGN ASSEMBLY AS SHOWN.



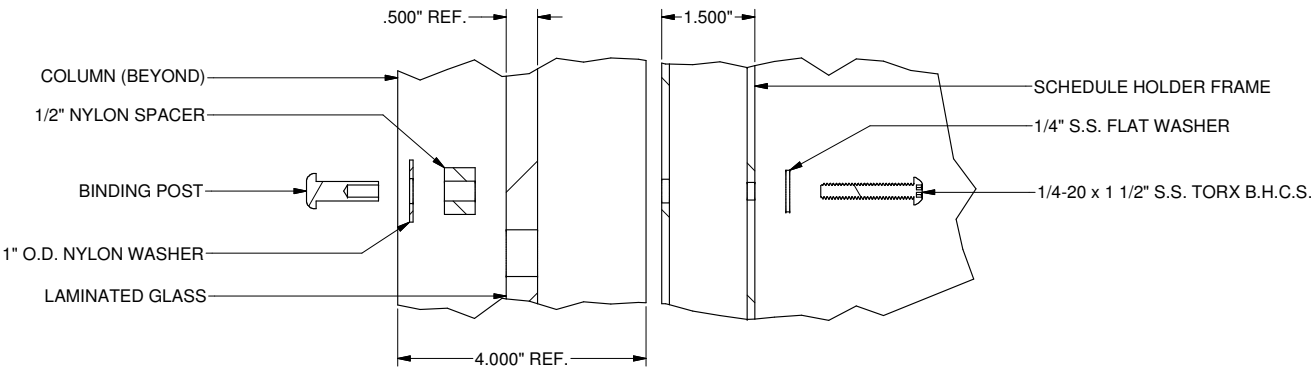
BRASCO INTERNATIONAL, INC.
32400 INDUSTRIAL DR.
MADISON HEIGHTS, MICHIGAN 48071
1-800-893-3665 WWW.BRASCO.COM

THIS DRAWING IS CONFIDENTIAL AND IS FOR THE SOLE USE OF
OUR CUSTOMERS AND MAY NOT BE REPRODUCED OR COPIED
WITHOUT WRITTEN PERMISSION FROM BRASCO INTERNATIONAL.

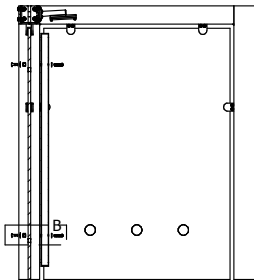
CUSTOMER: BRASCO INTERNATIONAL, INC		DESIGNER: HAUS	CHECKER: BDH
PROJECT: TRIDENT INSTALLATION INSTRUCTIONS		DATE: 4-24-14	DATE: 4-25-14
MODEL: SIGN ASSEMBLY	JOB # N/A	SHEET: 008	REVISION: A

-- MOUNT SCHEDULE HOLDER ASSEMBLY TO GLASS AS SHOWN.

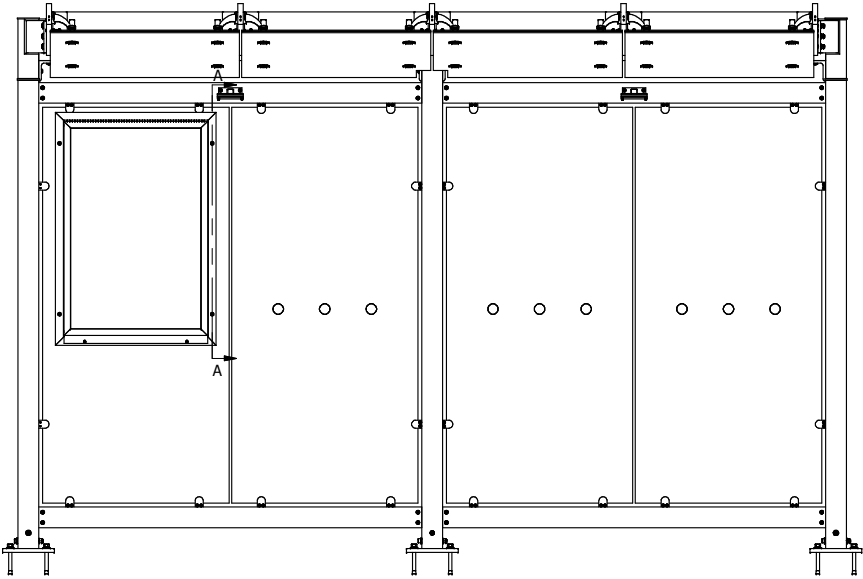
DO NOT OVER-TIGHTEN!




DETAIL B



SECTION A-A



	BRASCO INTERNATIONAL, INC. 32400 INDUSTRIAL DR. MADISON HEIGHTS, MICHIGAN 48071 1-800-893-3665 WWW.BRASCO.COM		CUSTOMER: BRASCO INTERNATIONAL, INC		DESIGNER: HAUS	CHECKER: BDH
			PROJECT: TRIDENT INSTALLATION INSTRUCTIONS		DATE: 4-24-14	DATE: 4-25-14
	THIS DRAWING IS CONFIDENTIAL AND IS FOR THE SOLE USE OF OUR CUSTOMERS AND MAY NOT BE REPRODUCED OR COPIED WITHOUT WRITTEN PERMISSION FROM BRASCO INTERNATIONAL.		MODEL: SCHEDULE HOLDER ASSEMBLY	JOB # N/A	SHEET: 009	REVISION: A