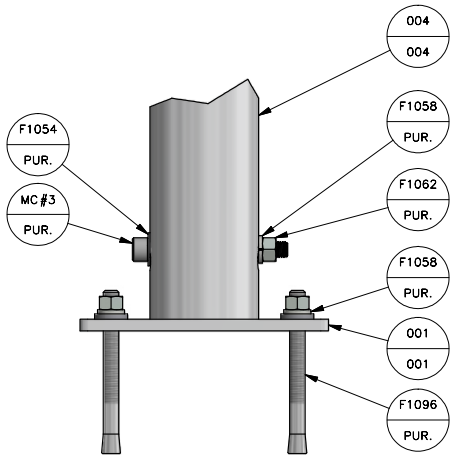
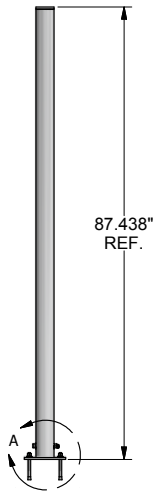
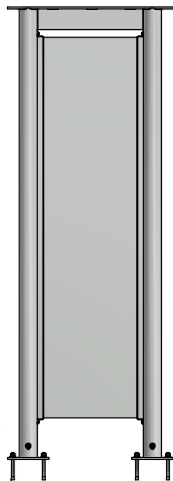
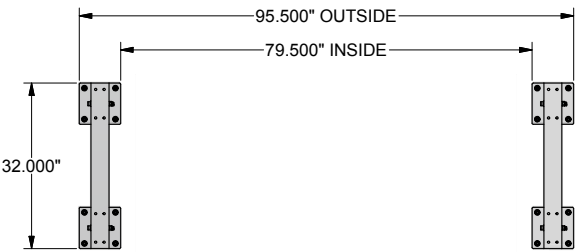


- PLACE SIDE WALL ASSEMBLIES IN DESIRED LOCATION.
 - MARK HOLES LOCATIONS ON CONCRETE AND MOVE WALL ASSEMBLIES OUT OF THE WAY.
 - AT MARKED LOCATIONS, DRILL A 1/2" DIA. HOLE IN CONCRETE USING A CARBIDE BIT AND A HAMMER DRILL. THE HOLE NEEDS TO BE DRILLED A MIN. DEPTH OF 5" IN ORDER TO ALLOW SPACE FOR DEBRIS TO FALL DURING THE INSTALLATION PROCESS.
 - BEFORE INSERTING THE WEDGE ANCHOR IT IS IMPORTANT TO CLEAN DEBRIS FROM THE HOLE USING A VACUUM OR COMPRESSED AIR TO ENSURE THAT THE HOLE IS CLEAN OF ANY DEBRIS. THIS STEP IS CRITICAL FOR SUCCESSFUL ANCHOR INSTALLATION.
 - PUT THE WASHER AND LOCK WASHER ON THE WEDGE ANCHOR AND THREAD THE NUT ON. IT IS IMPORTANT TO MAKE SURE THAT THE NUT IS THREADED SO THAT THE TOP OF IT IS LEVEL WITH THE TOP OF THE WEDGE ANCHOR IN ORDER TO HELP PROTECT THE THREADS FROM ANY DAMAGE WHILE HAMMERING THE ANCHOR INTO THE HOLE.
 - REPLACE WALL ASSEMBLIES AND ALIGN WITH HOLES.
 - INSERT THE WEDGE ANCHOR WITH THE CLIP END FIRST THROUGH THE BOOT AND INTO HOLE IN THE CONCRETE. USING A HAMMER, HIT THE WEDGE ANCHOR AND NUT WITH SHARP BLOWS UNTIL THE WASHER AND NUT ARE NEARLY SNUG AGAINST THE ANCHOR PLATE.
 - DO NOT FULLY TIGHTEN THE NUTS UNTIL THE ROOF IS INSTALLED.
-
- PLUMB AND LEVEL WALL ASSEMBLIES AS NEEDED.
 - USING THE HOLES IN THE COLUMNS AS A TEMPLATE USE A 1/2" DRILL BIT TO DRILL THROUGH ANCHOR BOOTS.
 - SECURE THE COLUMNS TO THE ANCHOR BOOTS USING (1) 1/2-13 x 4 1/2" S.S. BOLT PER CONNECTION.



DETAIL A
SCALE 1/2

BRASCO INTERNATIONAL SUB ASSEMBLY PARTS LIST					
ITEM	QTY	SHT	DESCRIPTION	MODEL NUMBER	PART NUMBER
MC#3	4	PUR.	1/2-13 X 4 1/2" S.S. S.H.C.S.		92196A730
F1096	16	PUR.	1/2-13 X 5 1/4" S.S. WEDGE ANCHOR		F1096
F1058	20	PUR.	1/2" S.S. LOCK WASHER		F1058
F1054	4	PUR.	1/2" S.S. FLAT WASHER		F1054
F1062	4	PUR.	1/2-13 S.S. HEX NUT		F1062
004	2	004	SIDE WALL ASSEMBLY		SEE DWG
001	4	001	COLUMN ANCHOR SHOE		SEE DWG

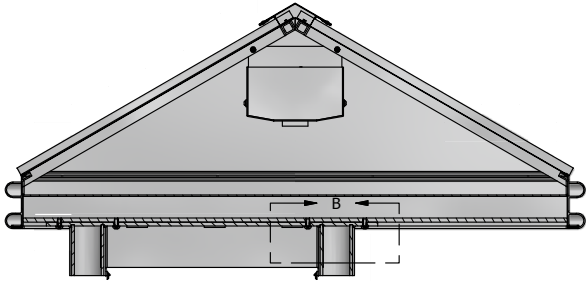


BRASCO INTERNATIONAL, INC.
32400 INDUSTRIAL DR.
MADISON HEIGHTS, MICHIGAN 48071
1-800-893-3665 WWW.BRASCO.COM

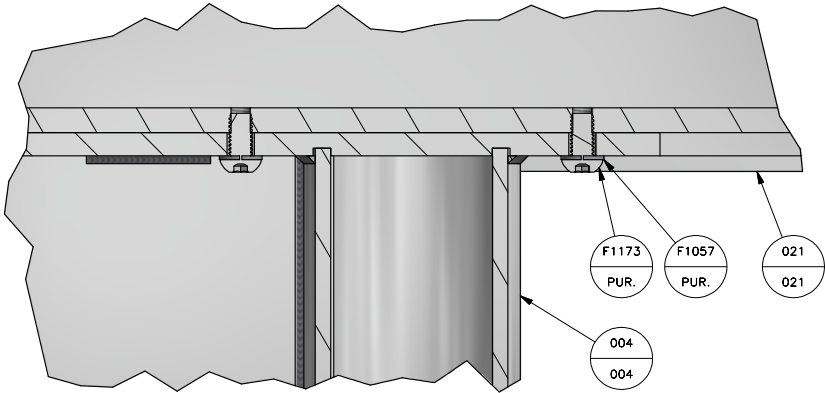
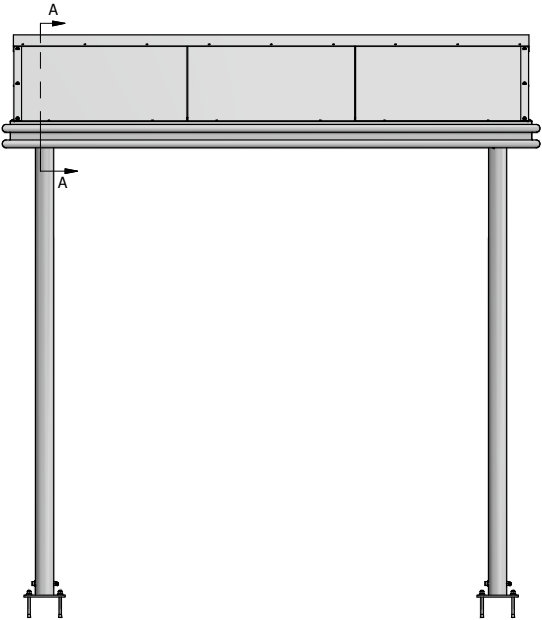
THIS DRAWING IS CONFIDENTIAL AND IS FOR THE SOLE USE OF OUR CUSTOMERS AND MAY NOT BE REPRODUCED OR COPIED WITHOUT WRITTEN PERMISSION FROM BRASCO INTERNATIONAL.

CUSTOMER: BRASCO INTERNATIONAL		DESIGNER: HAUS	CHECKER: BDH
PROJECT: INSTALLATION INSTRUCTIONS		DATE: 12=8=16	DATE: 12-9-16
MODEL: COLUMN ANCHORING	JOB #	SHEET: 001	REVISION: A

- SET ROOF ASSEMBLY ON TO WALL ASSEMBLIES.
- SECURE USING (1) 3/8-16" x 1" B.H.C.S. WITH S.S. LOCK WASHER PER HOLE.
- ONCE ROOF IS SECURE, FULLY TIGHTEN WEDGE ANCHOR NUTS.



SECTION A-A



DETAIL B

BRASCO INTERNATIONAL SUB ASSEMBLY PARTS LIST					
ITEM	QTY	SHT	DESCRIPTION	MODEL NUMBER	PART NUMBER
F1173	16	PUR.	3/8-16 X 3/4" S.S. BUTTON HD. SOC CAP SCREW		F1173
F1057	16	PUR.	3/8" S.S. LOCK WASHER		F1057
021	1	021	ROOF ASSEMBLY		SEE DWG
004	2	004	SIDE WALL ASSEMBLY		SEE DWG

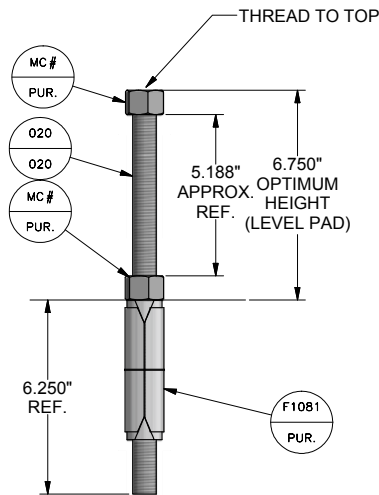
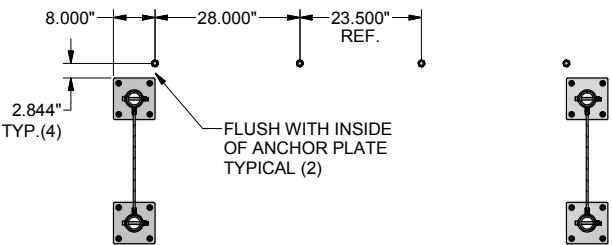


BRASCO INTERNATIONAL, INC.
32400 INDUSTRIAL DR.
MADISON HEIGHTS, MICHIGAN 48071
1-800-893-3665 WWW.BRASCO.COM

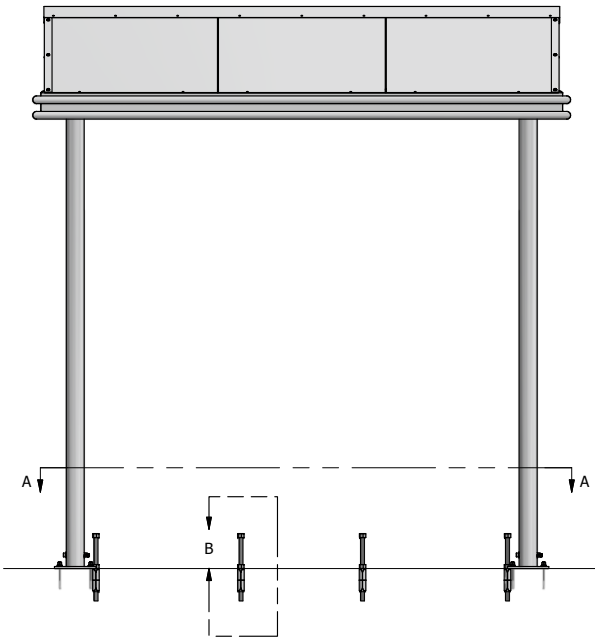
THIS DRAWING IS CONFIDENTIAL AND IS FOR THE SOLE USE OF
OUR CUSTOMERS AND MAY NOT BE REPRODUCED OR COPIED
WITHOUT WRITTEN PERMISSION FROM BRASCO INTERNATIONAL.

CUSTOMER:		BRASCO INTERNATIONAL		DESIGNER:	HAUS	CHECKER:	BDH
PROJECT:		INSTALLATION INSTRUCTIONS		DATE:	12=8=16	DATE:	12-9-16
MODEL:	ROOF ATTACHMENT	JOB #		SHEET:	002	REVISION:	A

- MARK HOLES AS SHOWN FOR SLEEVE ANCHORS ON CONCRETE.
- AT MARKED LOCATIONS, DRILL A 1 1/4" DIA. HOLE IN CONCRETE USING A CARBIDE BIT AND A HAMMER DRILL. THE HOLE NEEDS TO BE DRILLED A MIN. DEPTH OF 6 1/2" TO ALLOW DEBRIS TO FALL DURING INSTALLION OF SLEEVE ANCHORS.
- IF THE CONCRETE SLAB IS LESS THAT 6 1/2" THICK DRILL THROUGH SLAB.
- BEFORE INSERTING THE SLEEVE ANCHOR IT IS IMPORTANT TO CLEAN DEBRIS FROM THE HOLE USING A VACUUM OR COMPRESSED AIR TO ENSURE THAT THE HOLE IS CLEAN OF ANY DEBRIS. THIS STEP IS CRITICAL FOR SUCCESSFUL ANCHOR INSTALLATION.
- THREAD NUTS ONTO THREADED ROD. MAKE SURE ONE NUT IS FLUSH WITH THE TOP OF THE ROD TO PROTECT THREADS.
- STRIKE WITH A HAMMER UNTIL THE DROP-IN ANCHOR IS FLUSH WITH CONCRETE.



DETAIL B



BRASCO INTERNATIONAL SUB ASSEMBLY PARTS LIST					
ITEM	QTY	SHT	DESCRIPTION	MODEL NUMBER	PART NUMBER
MC#	8	PUR.	3/4-10 S.S. HEX NUT		91845A330
F1081	4	PUR.	3/4-10 X 4 1/2" EXPANSION ANCHOR		F1081
020	4	020	3/4-10 S.S. THREADED ROD		SEE DWG

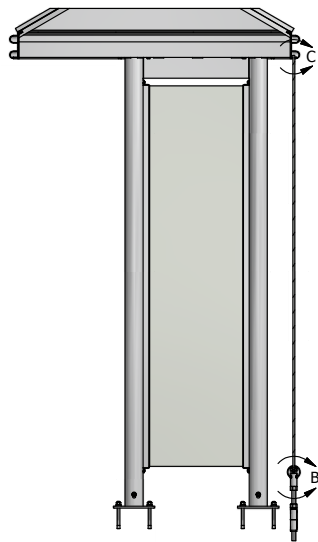


BRASCO INTERNATIONAL, INC.
32400 INDUSTRIAL DR.
MADISON HEIGHTS, MICHIGAN 48071
1-800-893-3665 WWW.BRASCO.COM

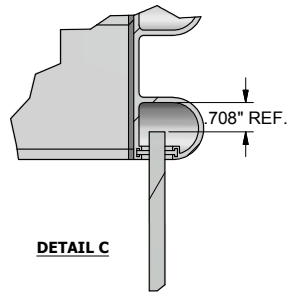
THIS DRAWING IS CONFIDENTIAL AND IS FOR THE SOLE USE OF OUR CUSTOMERS AND MAY NOT BE REPRODUCED OR COPIED WITHOUT WRITTEN PERMISSION FROM BRASCO INTERNATIONAL.

CUSTOMER: BRASCO INTERNATIONAL		DESIGNER: HAUS	CHECKER: BDH
PROJECT: INSTALLATION INSTRUCTIONS		DATE: 12=8=16	DATE: 12-9-16
MODEL: REAR WALL ANCHOR	JOB #	SHEET: 003	REVISION: A

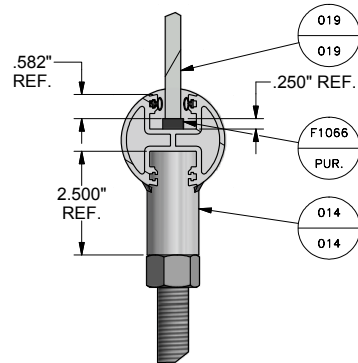
- THREAD TOP NUT ON THREADED ROD DOWN AT LEAST 2 1/2".
- SET SILL ASSEMBLY TUBE ONTO THREADED RODS.
- LEVEL SILL TUBE. FOLLOW DIMENSION GUIDLINES.
- PLACE GLASS SETTING BLOCKS INTO SILL CHANNEL EVENLY SPACED. EACH GLASS PANEL REQUIRES (3) SETTING BLOCKS.
- USING GLASS CUPS, CAREFULLY LIFT GLASS AND SLIDE UP INTO CHANNEL IN ROOF FASCIA HIGH ENOUGH TO CLEAR EDGE OF SILL TUBE.
- CAREFULLY SET GLASS DOWN ONTO SETTING BLOCKS.
- GLASS MUST FULLY ENGAGE AT TOP AND BOTTOM.



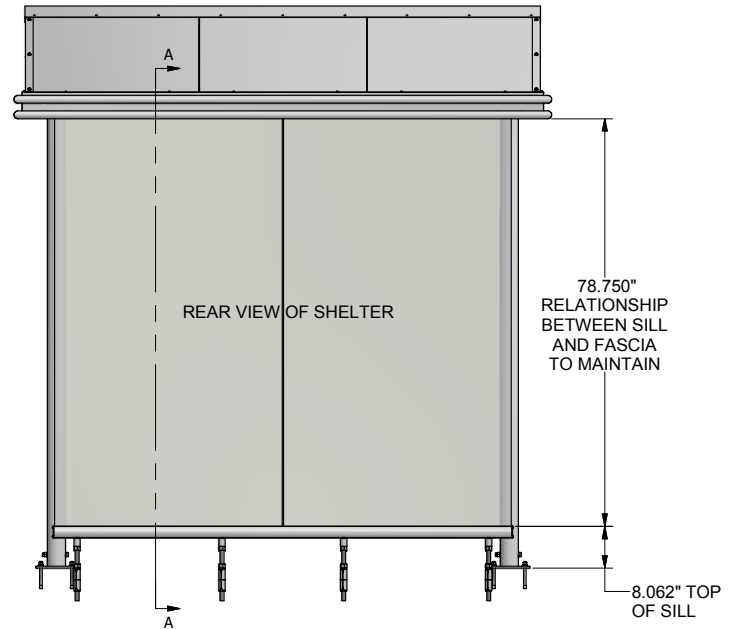
SECTION A-A



DETAIL C



DETAIL B



BRASCO INTERNATIONAL SUB ASSEMBLY PARTS LIST

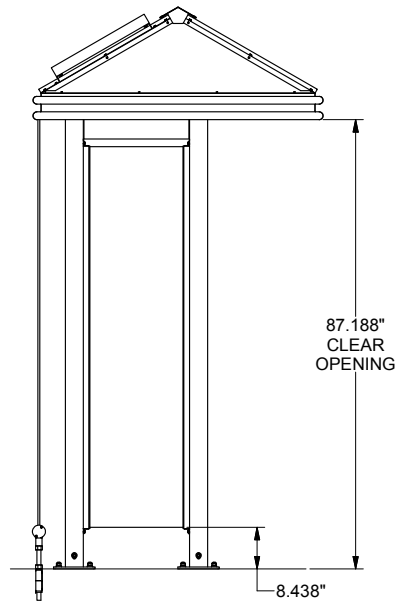
ITEM	QTY	SHT	DESCRIPTION	MODEL NUMBER	PART NUMBER	NOTES
F1066	6	PUR.	GLASS SETTING BLOCK		F1066	
019	2	019	REAR WALL GLASS		GC 38T FAB 44X80	SEE DWG
014	1	014	SILL TUBE ASSEMBLY			SEE DWG



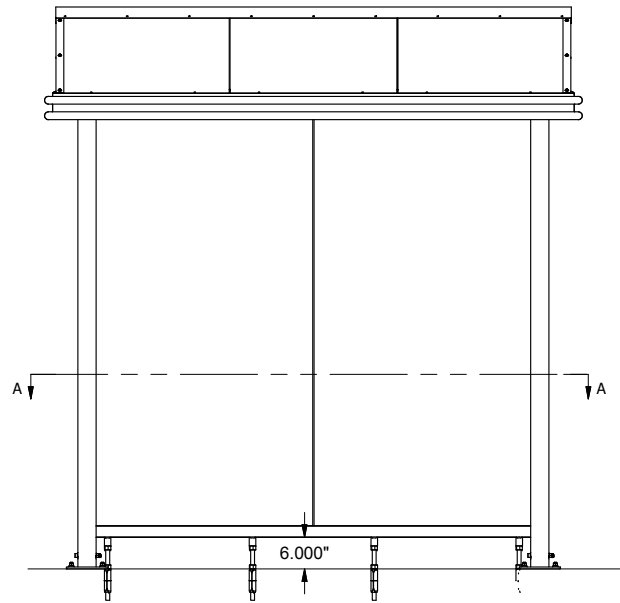
BRASCO INTERNATIONAL, INC.
32400 INDUSTRIAL DR.
MADISON HEIGHTS, MICHIGAN 48071
1-800-893-3665 WWW.BRASCO.COM

THIS DRAWING IS CONFIDENTIAL AND IS FOR THE SOLE USE OF
OUR CUSTOMERS AND MAY NOT BE REPRODUCED OR COPIED
WITHOUT WRITTEN PERMISSION FROM BRASCO INTERNATIONAL.

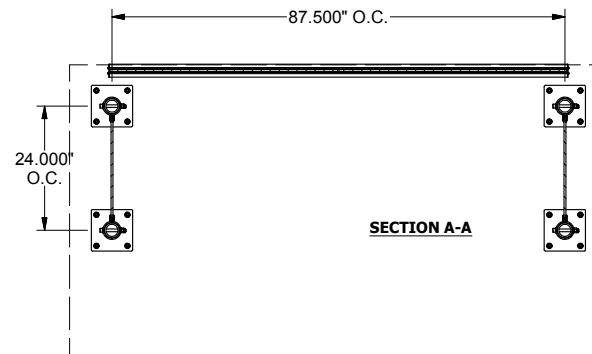
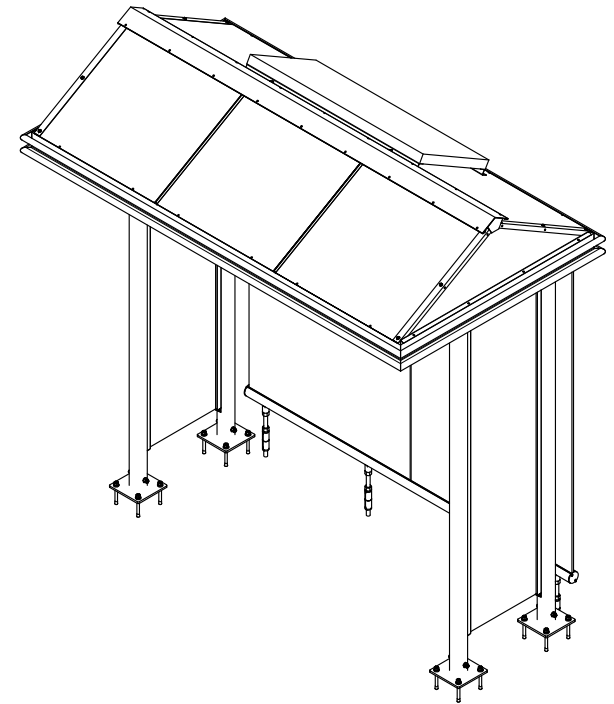
CUSTOMER: BRASCO INTERNATIONAL		DESIGNER: HAUS	CHECKER: BDH
PROJECT: INSTALLATION INSTRUCTIONS		DATE: 12=8=16	DATE: 12-9-16
MODEL: GLASS INSTALLATION	JOB #	SHEET: 004	REVISION: A



SIDE ELEVATION



FRONT ELEVATION



SECTION A-A

QUANTITY (1) SHELTER THUS

SPECIFICATIONS:

- RAL9017 TRAFFIC BLACK POWDER COATED ALUMINUM STRUCTURE
- 3/8" CLEAR TEMPERED SAFETY GLASS
- 4' FOOT CONTOUR BENCH WITH PERFORATED SLAT AND ARMREST

- PAC CLAD MATTE BLACK ALUMINUM STANDING SEAM GABLE ROOF WITH FASCIA/GUTTER SYSTEM
- ROOF MOUNTED BRASCO PLS SOLAR LIGHTING PACKAGE (NOT SHOWN)



BRASCO INTERNATIONAL, INC.
 32400 INDUSTRIAL DR.
 MADISON HEIGHTS, MICHIGAN 48071
 1-800-893-3665 WWW.BRASCO.COM

THIS DRAWING IS CONFIDENTIAL AND IS FOR THE SOLE USE OF OUR CUSTOMERS AND MAY NOT BE REPRODUCED OR COPIED WITHOUT WRITTEN PERMISSION FROM BRASCO INTERNATIONAL.

CUSTOMER: BRASCO INTERNATIONAL		DESIGNER: HAUS	CHECKER: BDH
PROJECT: BAYLINE STYLE GABLE ROOF SHELTER		DATE: 6-27-16	DATE: 6-29-16
MODEL: BL-05-09-SSG	JOB #	SHEET: 001	REVISION: A