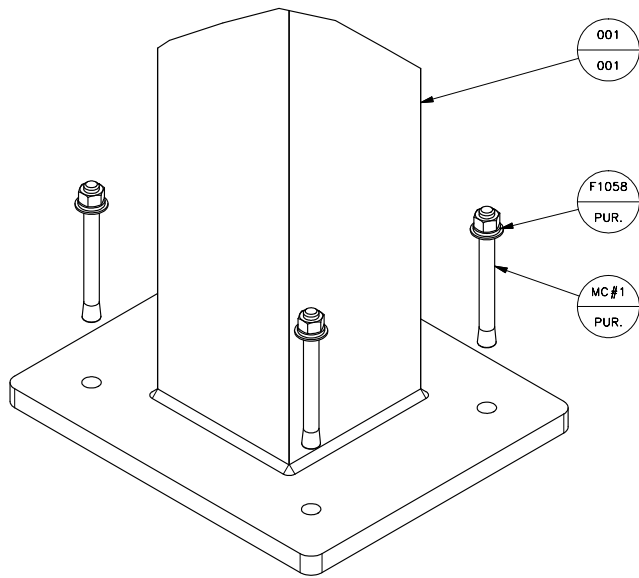
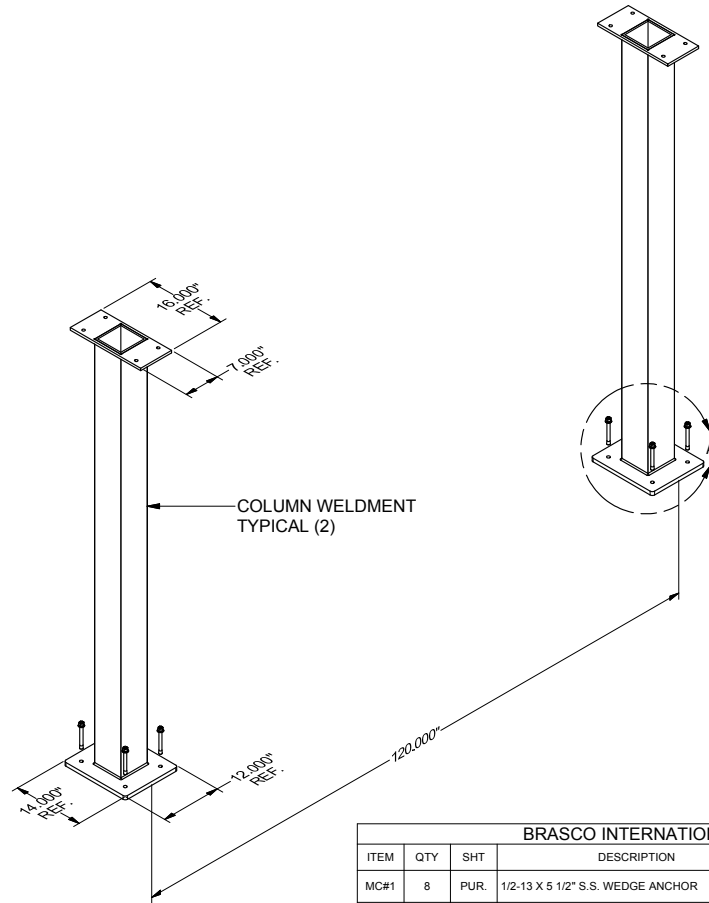


- LAYOUT COLUMNS AS SHOWN AND MARK ALL HOLE LOCATIONS
- MOVE COLUMN OUT OF THE WAY.
- DRILL A 1/2" DIA. HOLE IN CONCRETE USING A CARBIDE BIT AND A HAMMER DRILL. THE HOLE NEEDS TO BE DRILLED A MIN. DEPTH OF 5 1/2" IN ORDER TO ALLOW SPACE FOR DEBRIS TO FALL DURING THE INSTALLATION PROCESS.
- BEFORE INSERTING THE WEDGE ANCHOR IT IS IMPORTANT TO CLEAN DEBRIS FROM THE HOLE USING A WIRE BRUSH, VACUUM OR COMPRESSED AIR TO ENSURE THAT THE HOLE IS CLEAN OF ANY DEBRIS. THIS STEP IS CRITICAL FOR SUCCESSFUL ANCHOR INSTALLATION.
- PUT THE WASHER AND LOCK WASHER ON THE WEDGE ANCHOR AND THREAD THE NUT ON. IT IS IMPORTANT TO MAKE SURE THAT THE NUT IS THREADED SO THAT THE TOP OF IT IS LEVEL WITH THE TOP OF THE WEDGE ANCHOR IN ORDER TO HELP PROTECT THE THREADS FROM ANY DAMAGE WHILE HAMMERING THE ANCHOR INTO THE HOLE.
- REPLACE COLUMN AND ALIGN WITH HOLES.
- INSERT THE WEDGE ANCHOR WITH THE CLIP END FIRST THROUGH THE BOOT AND INTO HOLE IN THE CONCRETE. USING A HAMMER, HIT THE WEDGE ANCHOR AND NUT WITH SHARP BLOWS UNTIL THE WASHER AND NUT ARE SNUG AGAINST THE COLUMN ANCHOR PLATE.
- DO NOT FULLY TIGHTEN THE NUTS UNTIL THE WALLS ARE ASSEMBLED AND THE ROOF IS IN PLACE.



DETAIL A



BRASCO INTERNATIONAL SUB ASSEMBLY PARTS LIST						
ITEM	QTY	SHT	DESCRIPTION	MODEL NUMBER	PART NUMBER	NOTES
MC#1	8	PUR.	1/2-13 X 5 1/2" S.S. WEDGE ANCHOR		92188A302	
F1058	8	PUR.	1/2" S.S. LOCK WASHER		F1058	
001	2	001	WELDED COLUMN	AX001		SEE DWG

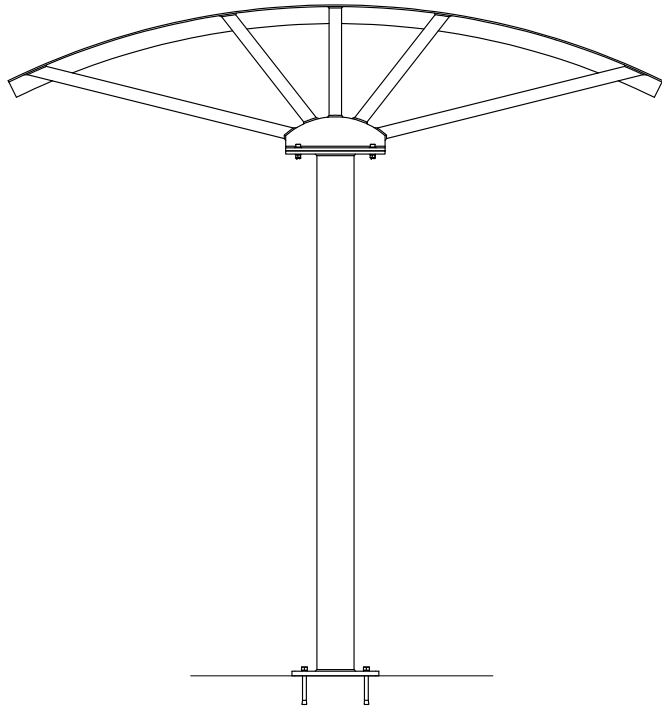


BRASCO INTERNATIONAL, INC.
 32400 INDUSTRIAL DR.
 MADISON HEIGHTS, MICHIGAN 48071
 1-800-893-3665 WWW.BRASCO.COM

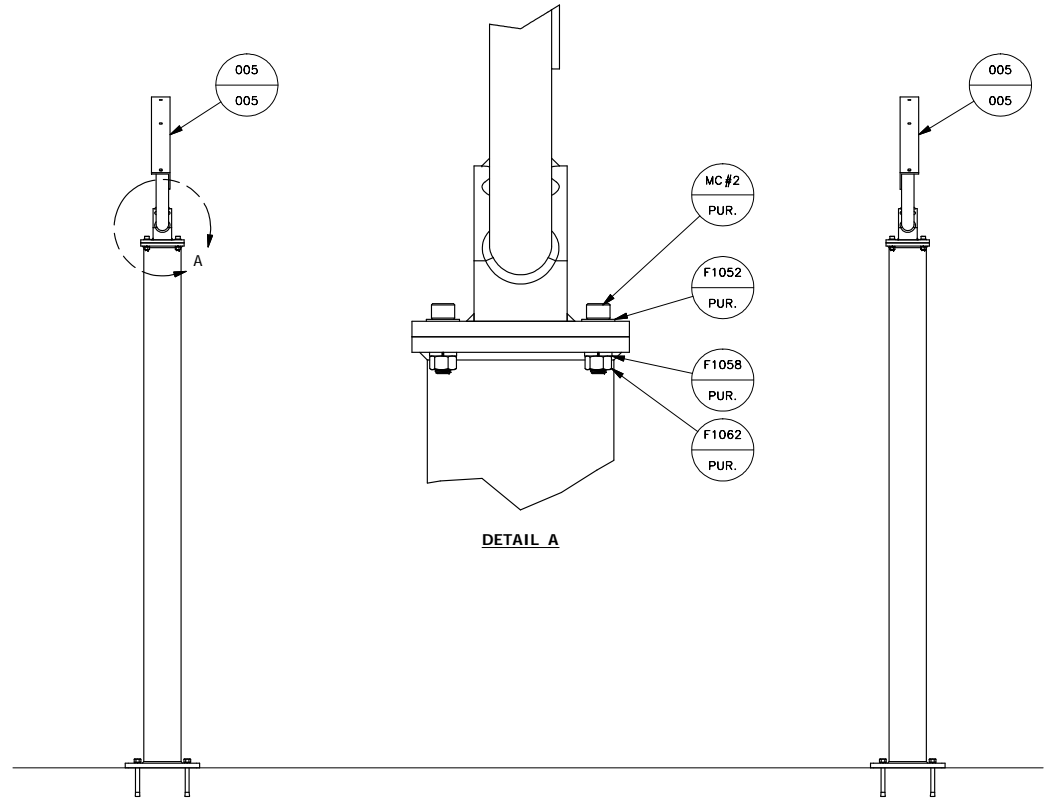
THIS DRAWING IS CONFIDENTIAL AND IS FOR THE SOLE USE OF OUR CUSTOMERS AND MAY NOT BE REPRODUCED OR COPIED WITHOUT WRITTEN PERMISSION FROM BRASCO INTERNATIONAL.

CUSTOMER:	BRASCO INTERNATIONAL	DESIGNER:	BDH	CHECKER:	BDH
PROJECT:	AXLE BIKE SHELTER INSTRUCTIONS	DATE:	6-19-14	DATE:	6-20-14
MODEL:	COLUMN INSTALL	JOB #	N/A	SHEET:	001
		REVISION:			A

- PLACE HUB WELDMENT ON TOP OF COLUMN.
- SECURE HUB TO COLUMN USING (1) 1/2-13 x 1 3/4" S.S. SOCKET HEAD CAP SCREW, S.S. FLAT WASHER, S.S. LOCK WASHER, & S.S. HEX NUT PER CLEARANCE HOLE. (4) PER CONNECTION.



SIDE ELEVATION



FRONT ELEVATION

BRASCO INTERNATIONAL SUB ASSEMBLY PARTS LIST

ITEM	QTY	SHT	DESCRIPTION	MODEL NUMBER	PART NUMBER	NOTES
MC#2	8	PUR.	1/2-13 X 1 3/4" S.S. S.H.C.S.		92185A718	
F1062	8	PUR.	1/2-13 S.S. HEX NUT		F1062	
F1058	8	PUR.	1/2" S.S. LOCK WASHER		F1058	
F1052	8	PUR.	1/2" S.S. FLAT WASHER		F1054	
005	2	005	WELDED HUB			SEE DWG

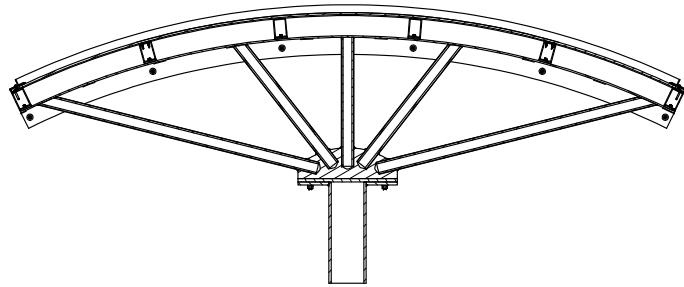


BRASCO INTERNATIONAL, INC.
 32400 INDUSTRIAL DR.
 MADISON HEIGHTS, MICHIGAN 48071
 1-800-893-3665 WWW.BRASCO.COM

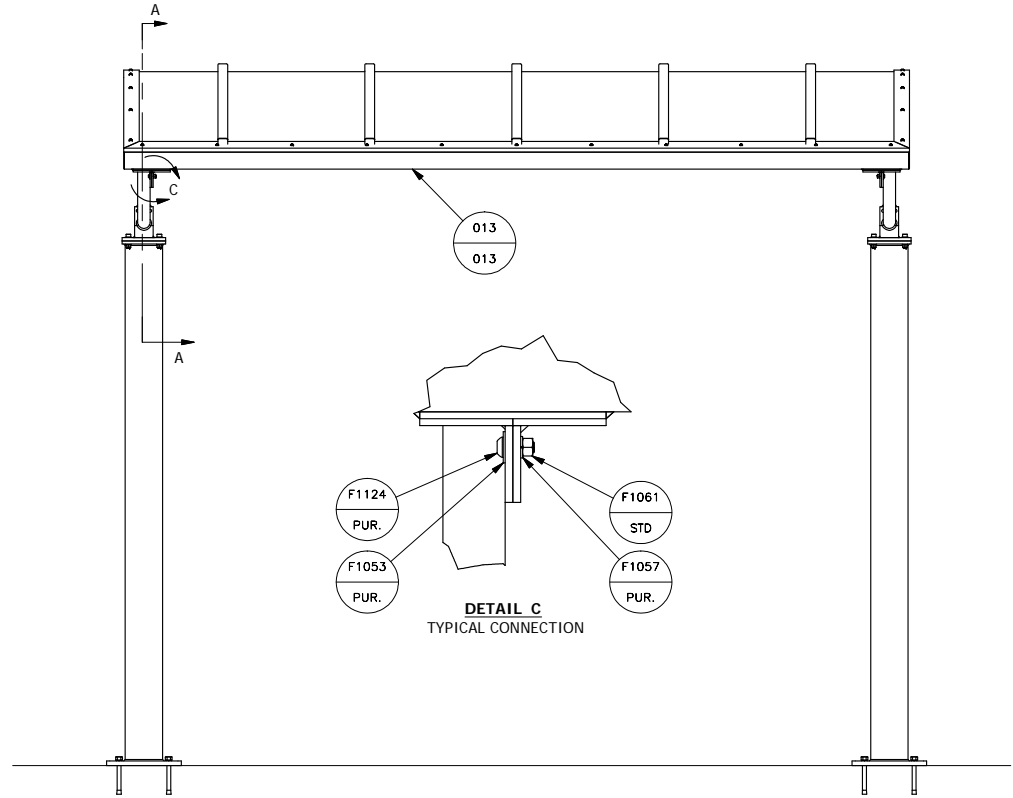
THIS DRAWING IS CONFIDENTIAL AND IS FOR THE SOLE USE OF OUR CUSTOMERS AND MAY NOT BE REPRODUCED OR COPIED WITHOUT WRITTEN PERMISSION FROM BRASCO INTERNATIONAL.

CUSTOMER: BRASCO INTERNATIONAL	DESIGNER: BDH	CHECKER: BDH
PROJECT: AXLE BIKE SHELTER INSTRUCTIONS	DATE: 6-19-14	DATE: 6-20-14
MODEL: HUB INSTALL	JOB # N/A	SHEET: 002
		REVISION: a

- PLACE ROOF ASSEMBLY ONTO HUBS.
- SECURE ROOF TO HUBS USING (1) 3/8-16 x 1" S.S. BUTTON HEAD CAP SCREW WITH (1) S.S. LOCK WASHER AND (1) 3/8-16 S.S. HEX NUT PER HOLE. (6) PER HUB.
- PLUMB COLUMNS AND FULLY TIGHTEN WEDGE ANCHORS.



SECTION A-A



BRASCO INTERNATIONAL SUB ASSEMBLY PARTS LIST

ITEM	QTY	SHT	DESCRIPTION	MODEL NUMBER	PART NUMBER	NOTES
F1124	12	PUR.	3/8-16 X 1" S.S. B.H.C.S.		F1124	
F1061	12	STD	3/8-16 S.S. HEX NUT		F1061	
F1057	12	PUR.	3/8" S.S. LOCK WASHER		F1057	
F1053	12	PUR.	3/8" S.S. FLAT WASHER		F1053	
013	1	013	ROOF ASSEMBLY	AX013		SEE DWG



BRASCO INTERNATIONAL, INC.
 32400 INDUSTRIAL DR.
 MADISON HEIGHTS, MICHIGAN 48071
 1-800-893-3665 WWW.BRASCO.COM

THIS DRAWING IS CONFIDENTIAL AND IS FOR THE SOLE USE OF OUR CUSTOMERS AND MAY NOT BE REPRODUCED OR COPIED WITHOUT WRITTEN PERMISSION FROM BRASCO INTERNATIONAL.

CUSTOMER:	BRASCO INTERNATIONAL	DESIGNER:	BDH	CHECKER:	BDH
PROJECT:	AXLE BIKE SHELTER INSTRUCTIONS	DATE:	6-19-14	DATE:	6-20-14
MODEL:	ROOF INSTALL	JOB #	N/A	SHEET:	003
				REVISION:	a